

2025 NATIONAL REGISTRY RECERTIFICATION GUIDE

Navigating NREMT CE and
Documentation Requirements

BROUGHT TO YOU BY



**COLUMBIA
SOUTHERN**
UNIVERSITY

EMSWORLD

PARAMEDIC

Training isn't a priority. It's a necessity.

A typical day for an EMS practitioner is often unpredictable. Being prepared with the training and certification necessary to provide top-notch patient care not only promotes a safer community, but also could be the life-saving difference in a time of emergency. However, with work, family and other commitments, it can be hard to fit continuing education into an already demanding schedule. We're here to help.

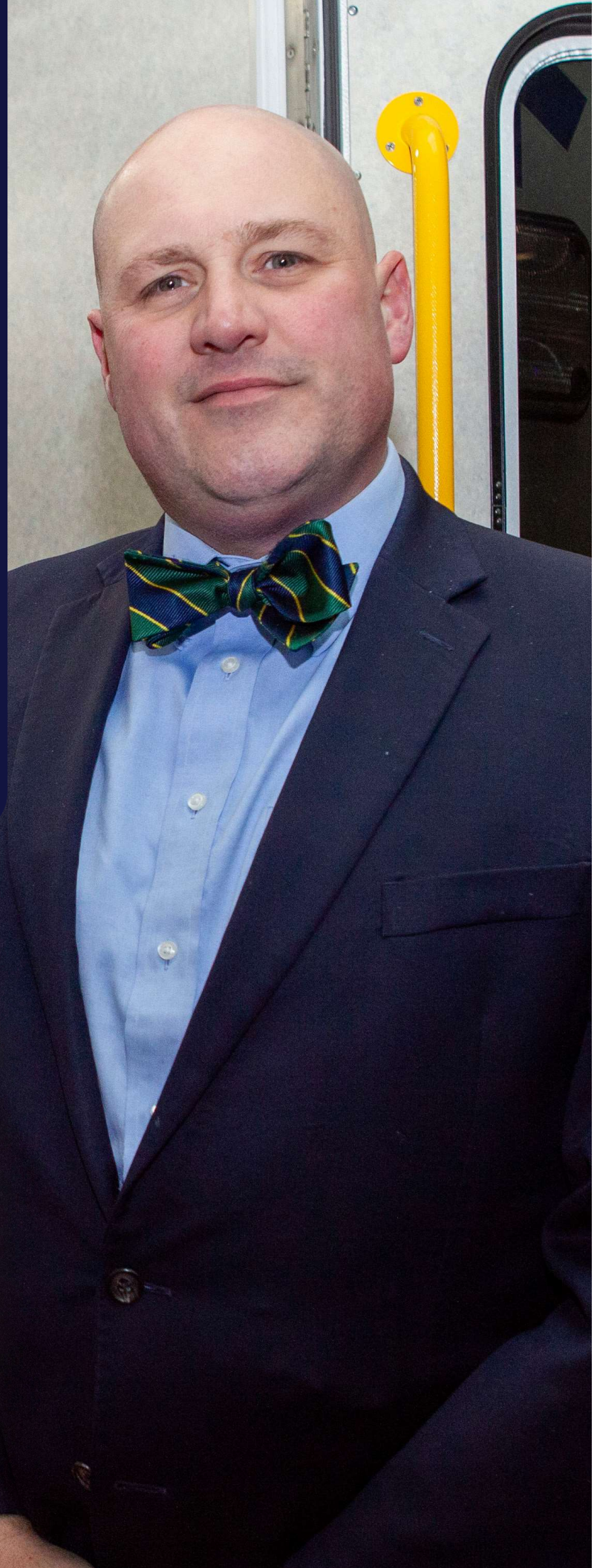
As an online university rooted in emergency and safety services training, Columbia Southern University is proud to partner with EMS World to provide the following training and certification guide. The following guide outlines some of the most common training and certification opportunities available to today's EMS professionals.

Disclaimer: This is not a comprehensive list of instructions for recertification. Providers must check with their state's recertification requirements, which vary by state and may differ from those requested by the National Registry. Content courtesy National Registry except for practitioner testimonials.



I always wanted to make changes to the status quo, but was advised that was 'above my pay grade' or 'you are just a paramedic.' So, I decided to go back to school to make changes to a system I loved dearly."

Matthew Ward, MBA



ANNUAL RE-CERTIFICATION DEADLINE: MARCH 31

How to Recertify Online:

- ▶ Log in to your account on www.nremt.org.
- ▶ Ensure your profile is up to date (e.g. address and email).
- ▶ Click 'Recertification' to enter your education and submit application
- ▶ Submit payment for application.
- ▶ Print updated certification card upon approval.

What is the National Continued Competency Program (NCCP)?

The NCCP was constructed using methodology similar to that of the American Board of Medical Specialties requirements and streamlines the recertification process into three strategic categories of continuing education: National, Local, and Individual. The National Continued Competency Program encourages Nationally Certified EMS personnel to pursue life-long education while also providing state and local agencies the freedom to customize continuing education to meet local operational needs.

NOT ACCEPTABLE FOR CE:

Performance of duty, clinical rotations which are not part of an initial EMS course program, Instructor methodology courses, management and leadership courses to include fire/EMS administrative courses, preceptor hours or serving as a skills examiner for state or National Registry psychomotor examinations, and most core or general education college courses that do not apply directly to EMS topics.

Recertification by Exam

This option enables you to demonstrate continued competency without documenting continuing education. You have one attempt to pass the exam beginning one year prior to your expiration date. Visit nremt.org and select your certification level (EMR, EMT, AEMT, paramedic) for information on this option.



CERTIFICATION RENEWAL FEES:

- › EMR: \$18
- › EMT: \$25
- › AEMT: \$26
- › Paramedic: \$32
- › Late fee: \$50 in addition to renewal fee

RE-CERTIFICATION BY EXAMINATION FEES:

- › EMR: \$88
- › EMT: \$104
- › AEMT: \$159
- › Paramedic: \$175

CONTINUING EDUCATION

EMR - 16 credits

NATIONAL COMPONENT: 8 CREDITS

Airway/Respiration/Ventilation

Ventilation
Oxygenation

Cardiovascular

Post-resuscitation care
Stroke
Cardiac arrest
Pediatric cardiac arrest

Trauma

Central nervous system (CNS) injury

Medical

Infectious diseases
Emergencies:
▶ *Psychiatric and behavioral*
▶ *Toxicological*
▶ *Neurological*
▶ *Endocrine*
▶ *Immunological*
▶ *OB*

Operations

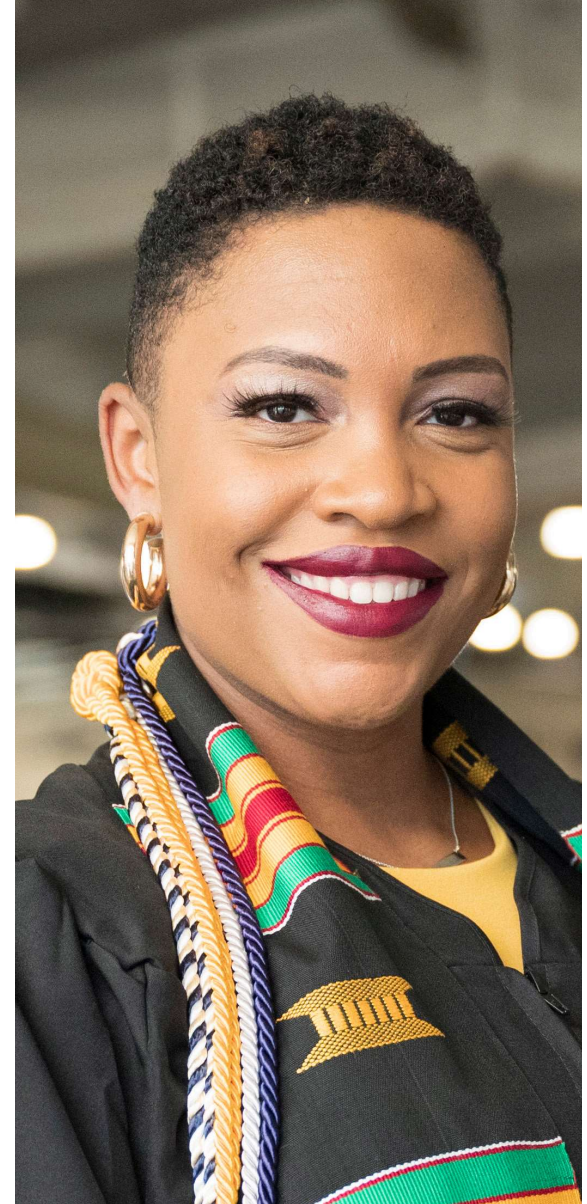
Field triage (disasters/MCIs)
EMS provider hygiene, safety and vaccinations
EMS culture of safety

LOCAL/STATE: 4 CREDITS

- ▶ If the agency and/or state EMS office requires specific education, that education may be entered into this section. If specific education is not specified, these required 4 credits are considered flexible but must be directly related to EMS patient care.

INDIVIDUAL: 4 CREDITS

- ▶ The 4 credits required for the individual component are flexible but must be directly related to EMS patient care.



I chose CSU over other institutions because of the convenience of the courses and schedules. It is ideal for continuing education and full-time workers.”

Jazmin Thomas
CSU Graduate

CONTINUING EDUCATION

EMT - 40 credits

NATIONAL COMPONENT: 20 CREDITS

Airway/Respiration/Ventilation

- Ventilation
- Oxygenation

Cardiovascular

- Post-resuscitation care
- Ventricular assist devices
- Stroke
- Cardiac arrest
- Pediatric cardiac arrest

Trauma

- Trauma triage
- CNS injury
- Hemorrhage control

Medical

- Special healthcare needs
- Infectious diseases
- Pain management
- Emergencies:
 - ▶ *Psychiatric and behavioral*
 - ▶ *Toxicological*
 - ▶ *Neurological*
 - ▶ *Endocrine*
 - ▶ *Immunological*
 - ▶ *OB*

Operations

- At-risk populations
- Ambulance safety
- Field triage (disasters/MCIs)
- EMS provider hygiene, safety and vaccinations
- EMS culture of safety
- Pediatric transport
- Crew resource management
- EMS research
- Evidence-based guidelines

LOCAL/STATE: 10 CREDITS

- ▶ If the agency and/or state EMS office requires specific education, that education may be entered into this section. If specific education is not specified, these required 10 credits are considered flexible but must be directly related to EMS patient care.

INDIVIDUAL: 10 CREDITS

- ▶ The 10 credits required for the individual component are flexible but must be directly related to EMS patient care.



I was able to complete the degree online on my time frame. It was challenging to complete a degree while working a demanding full-time job, but the CSU online degree program allowed me to do both successfully.

Trish Connolly
CSU Graduate

CONTINUING EDUCATION

AEMT - 50 credits

NATIONAL COMPONENT: 25 CREDITS

Airway/Respiration/Ventilation

- Ventilation
- Oxygenation

Cardiovascular

- Post-resuscitation care
- Ventricular assist devices
- Stroke
- Cardiac arrest
- Pediatric cardiac arrest
- Acute coronary syndrome

Trauma

- Trauma triage
- CNS injury
- Hemorrhage control
- Fluid resuscitation

Medical

- Special healthcare needs
- Infectious diseases
- Medication delivery
- Pain management
- Emergencies:
 - ▶ *Psychiatric and behavioral*
 - ▶ *Toxicological*
 - ▶ *Neurological*
 - ▶ *Endocrine*
 - ▶ *Immunological*
 - ▶ *OB*

Operations

- At-risk populations
- Ambulance safety
- Field triage (disasters/MCIs)
- EMS provider hygiene, safety and vaccinations
- EMS culture of safety
- Pediatric transport
- Crew resource management
- EMS research
- Evidence-based guidelines

LOCAL/STATE: 12.5 CREDITS

- ▶ If the agency and/or state EMS office requires specific education, it may be entered into this section. If specific education is not specified, these required 12.5 credits are considered flexible but must be directly related to EMS patient care.

INDIVIDUAL: 12.5 CREDITS

- ▶ The 12.5 credits required for the individual component are flexible but must be directly related to EMS patient care.



I ultimately chose CSU because of the tuition rate. I was also given credit for my professional certifications I obtained while on the job.”

Scott Formankiewicz
CSU Graduate

CONTINUING EDUCATION

PARAMEDIC - 60 credits

NATIONAL COMPONENT: 30 CREDITS

Airway/Respiration/Ventilation

- Ventilation
- Capnography
- Oxygenation

Cardiovascular

- Post-resuscitation care
- Ventricular assist devices
- Stroke
- Cardiac arrest
- Pediatric cardiac arrest
- Congestive heart failure
- Acute coronary syndrome

Trauma

- Trauma triage
- CNS injury
- Hemorrhage control
- Fluid resuscitation

Medical

- Special healthcare needs
- Infectious diseases
- Medication delivery
- Pain management
- Emergencies:
 - ▶ *Psychiatric and behavioral*
 - ▶ *Toxicological*
 - ▶ *Neurological*
 - ▶ *Endocrine*
 - ▶ *Immunological*
 - ▶ *OB*

Operations

- At-risk populations
- Ambulance safety
- Field triage (disasters/MCI)
- EMS provider hygiene, safety and vaccinations
- EMS culture of safety
- Pediatric transport
- Crew resource management
- EMS research
- Evidence-based guidelines

LOCAL/STATE: 15 CREDITS

▶ If the agency and/or state EMS office requires specific education, that education may be entered into this section. If specific education is not specified, these required 15 credits are considered flexible but must be directly related to EMS patient care.

INDIVIDUAL: 15 CREDITS

▶ The 15 credits required for the individual component are flexible but must be directly related to EMS patient care.



CSU's LifePace Learning[®] option is the perfect environment for my busy professional schedule. The courses are challenging and beneficial, each leaving me with a tangible sense of accomplishment as I progress toward completion of my degree."

Duane Nieves,
B.S. EMS Administration

BLS EXAMINATIONS

National Registry Announces Updates to Basic Life Support Certification Examinations

The National Registry of Emergency Medical Technicians (NREMT) has announced the forthcoming launch of updated Basic Life Support (BLS) Certification Examinations for Emergency Medical Responders (EMR) and Emergency Medical Technicians (EMT), effective April 7, 2025. Notable updates include:

- ✔ Modernized Examination Domains: Scene Size-Up and Safety; Primary Assessment; Secondary Assessment; Patient Treatment and Transport; Operations
- ✔ Revised Content: The content has been updated to better align with the real-world tasks performed by EMRs and EMTs, based on insights from subject matter experts (SMEs).
- ✔ April 4, 2025 will be the last day to take the current BLS examination for either EMR or EMT.
- ✔ These changes are for initial certification only—Recertification is a separate process that takes place after initial certification.



ACCEPTABLE EDUCATION

What does the National Registry accept as valid continuing education?

The National Registry accepts State EMS Office accepted and CAPCE accredited education, education from EMS education programs, and U.S. accredited academic credit or college course. All education must be directly related to EMS patient care. International providers must complete education from the list of approved United States education sources. For more information on approved education providers, go to www.capce.org or contact your local/state EMS office.

What education is not accepted by the National Registry?

The following education courses cannot be applied to continuing education requirements:

Performance of duty either paid or volunteer, clinical rotations which are not part of an initial EMS course program, Instructor methodology courses including all courses to become an instructor or achieve instructor level certifications, management and leadership courses to include fire/EMS administrative courses, preceptor hours including preceptor or field training officer methodologies, or serving as a skills examiner for state or National Registry psychomotor examinations. Most core or general education college courses do not apply directly to EMS topics, such as statistics, chemistry, sociology, languages, and more. Please contact the National Registry if you have a question on an accepted course.

Source: www.nremt.org. For more frequently asked questions, visit <https://nremt.org/document/recertification#howdoirecertify>.

NATIONAL REGISTRY DISCONTINUES ALS PSYCHOMOTOR EXAMS

The psychomotor examination for AEMTs and paramedics expired on June 30, 2024. Every paramedic and AEMT exam is now the AEMT and Paramedic Certification Exams.

“We have heard that you wanted an easier process for the ALS examination, and this change does just that by moving to one exam on one date,” according to a National Registry statement. “It also brings our Paramedic and AEMT examinations in line with most other health-based professions, which have made similar updates in recent years, and matches the best research and science that’s currently available.”

EMR and EMT exams will remain the same at this time.

Candidates should check with their state EMS office to determine state requirements.



A man with a shaved head, wearing a dark navy blue blazer, a light blue dress shirt, a green and gold patterned bow tie, grey trousers, and brown leather loafers, stands in a brightly lit hallway. He has his hands in his pockets and is looking directly at the camera. The hallway has wooden doors with numbers 34, 35, and 36 visible. The floor is polished and reflects the overhead lights.

About Columbia Southern University

Led by distinguished industry leaders, Columbia Southern University's emergency medical services degree programs use a multidisciplinary approach to EMS administration while providing students with a challenging, all-encompassing learning experience.

With courses covering legal, political and regulatory frameworks within EMS administration, CSU's curriculum provides students with the real-world knowledge and skills needed in their EMS careers.

To learn more about CSU and its online EMS degree programs, workshops and continuing education opportunities, visit ColumbiaSouthern.edu/EMS or call 877.347.6050.



I chose CSU initially for its reputation for working with first responders and military members on their pursuits of higher education. I enjoyed the online learning environment."

Matthew Ward, MBA